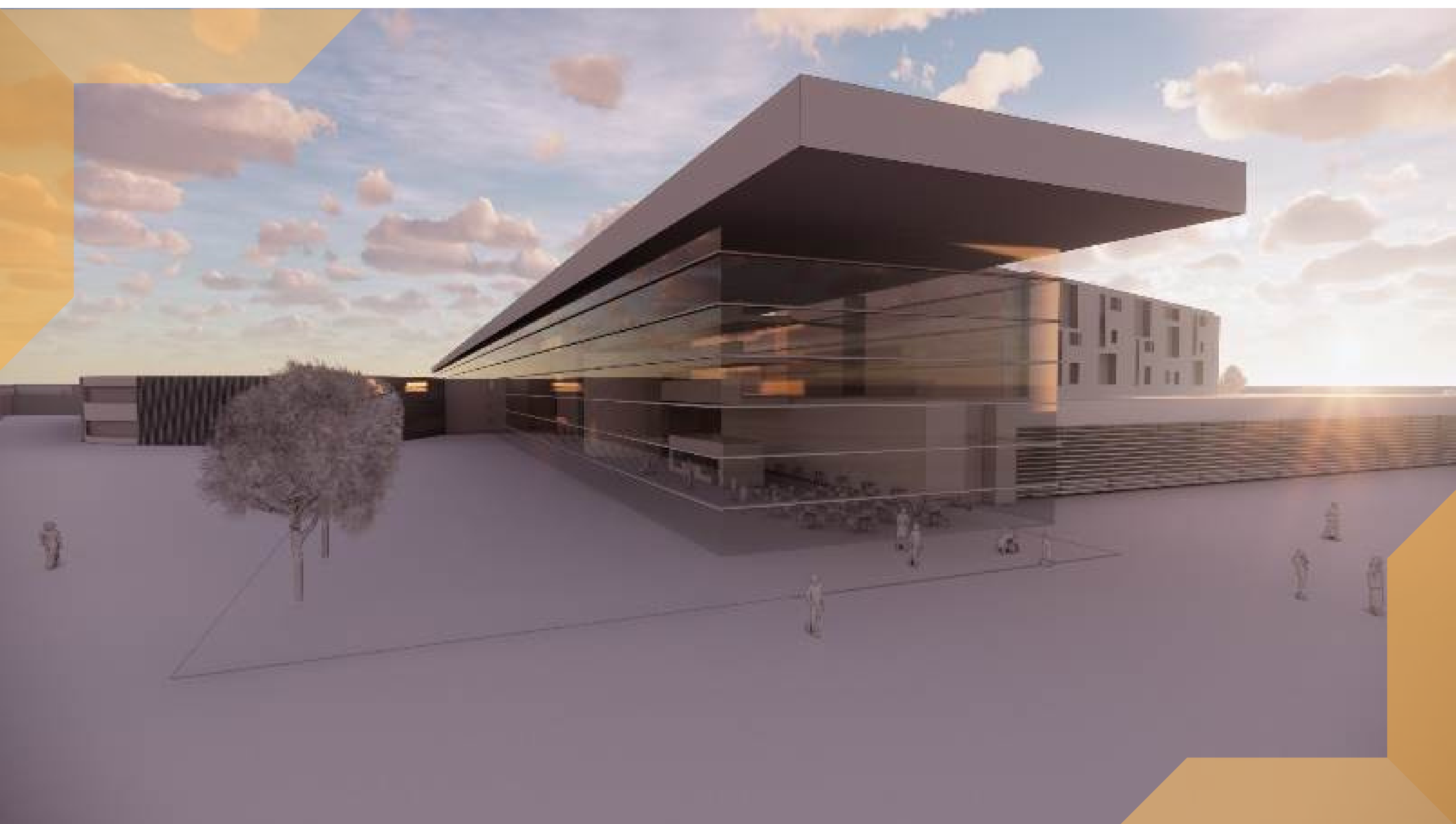




Mid Cheshire Hospitals
NHS Foundation Trust

Shaping an exciting future for Mid Cheshire Hospitals



Redevelopment proposal for Leighton Hospital

Mid Cheshire Hospitals NHS Foundation Trust is developing a long term vision for the future which includes an ambitious plan for a significant redevelopment of the Leighton site.

The proposals are at an early stage but would deliver a state of the art, technologically advanced and environmentally sustainable facility offering exceptional, modern healthcare.

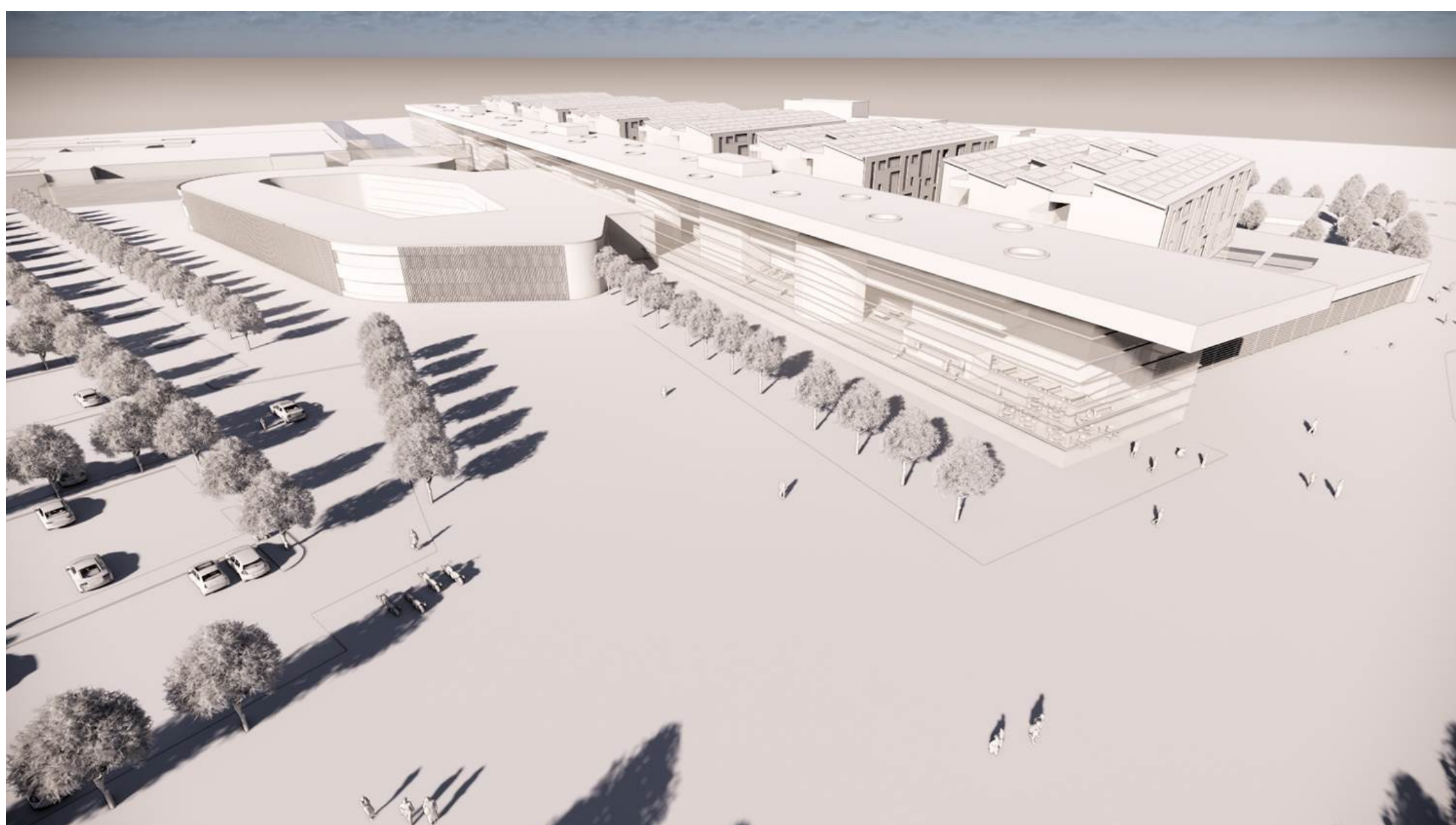
Mid Cheshire Hospitals will need to transform the care that it has traditionally provided, to meet the future needs of the population which is getting larger, growing older, and has increasing needs.

Leighton Hospital is in need of significant repair and upgrade and is therefore not suitable for delivering modern healthcare services due to its size, layout and extensive repair programme.

Rather than continue to spend a considerable amount more money to bring an unsuitable site to an acceptable standard, the Trust has instead developed the proposal for a new hospital which would rebuild about 85% of the existing site.

The redevelopment of the Leighton site would happen over a number of phases to make sure existing services are not disrupted and this can be achieved due to recent purchases of additional land onsite.

Redeveloping Leighton Hospital site gives a unique opportunity to create a facility that can help deliver a new clinical model – a blueprint for providing future healthcare both in and out of hospital.



The new build will...



deliver a state of the art, technologically advanced and environmentally sustainable facility offering exceptional, modern healthcare



improve the health and wellbeing of the local population



create a significant number of jobs for local people at a time of economic uncertainty



It will be a hugely important project to improve the health and wellbeing of the local population; developing a new hospital that is fit for purpose for the future and designed around the needs of patients, families and staff.

The project would also help to create a significant number of jobs for local people at a time of economic uncertainty.

It's an ambitious, long-term proposal but the Trust has a unique window of opportunity aligned to the governments' hospital rebuilding programme to seek investment for redevelopment.

This is a really exciting time for Mid Cheshire Hospitals and our region that will help us reshape the way health services for the local area are delivered.

The Trust is working with a strategic partner to explore the proposal in more detail in order to develop a strategic outline case by the end of February next year.

We are also continuing to work with partners on plans to develop a new Victoria Infirmary in Northwich which will provide existing and new services to the local population in state of the art healthcare buildings.

This is a really exciting time for Mid Cheshire Hospitals and our region that will help us reshape the way health services for the local area are delivered.

I look forward to keeping you updated and working with you as our plans progress.

